

Human Claudin 4 Protein-Nanodisc



Cat. No. CLD4-HM1N161

Description	
Source	Recombinant Human Claudin 4 Protein-Nanodisc is expressed from HEK293 with His tag at the C-terminus. It contains Met1-Val209.
Accession	O14493
Molecular Weight	The protein has a predicted MW of 23.31 kDa.
Endotoxin	Less than 1 EU per µg by the LAL method.

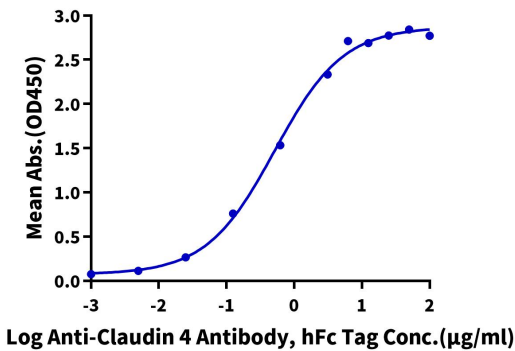
Formulation and Storage	
Formulation	Supplied as 0.22 µm filtered solution in PBS, 200mM L-Arginine (pH 7.4). Notice: Not recommended for flow cytometry in mammalian cells.
Storage	Valid for 6 months from date of receipt when stored at -80°C. Recommend to aliquot the protein into smaller quantities for optimal storage. Please minimize freeze-thaw cycles.

Background	
Claudin-4 (CLDN4) is a key component of tight junctions (TJs) in epithelial cells. CLDN4 is overexpressed in many epithelial malignancies and correlates with cancer progression. Changes in CLDN4 expression have been associated with epigenetic factors (such as hypomethylation of promoter DNA), inflammation associated with infection and cytokines, and growth factor signaling. CLDN4 helps to maintain the tumor microenvironment by forming TJs and acts as a barrier to the entry of anticancer drugs into tumors.	

Assay Data

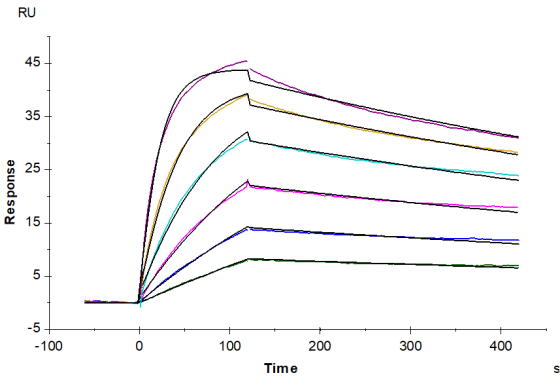
ELISA Data

Human Claudin 4 Nanodisc, His Tag ELISA
0.1µg Human Claudin 4 Nanodisc, His Tag Per Well



Immobilized Human Claudin 4 Nanodisc, His Tag at 1µg/ml (100µl/well) on the plate. Dose response curve for Anti-Claudin 4 Antibody, hFc Tag with the EC50 of 0.52µg/ml determined by ELISA (QC Test).

SPR Data



Human Claudin 4 Nanodisc, His Tag captured on CM5 Chip via Ant-His Antibody can bind Anti-Claudin 4 Antibody, hFc Tag with an affinity constant of 3.82 nM as determined in SPR assay (Biacore T200).